



Seek and You Shall Find

Prairie Swine Center Producer Meeting | Spring 2024

zoetis

Why Should We Do Postmortem Examinations??

Copyright © Zoetis



Copyright © Dr Jeffrey Bergemann 2024





**If You Don't Look You
May Never Know!!!**

Copyright © Zoetis

Postmortems Provide Good Value!



Changes in Production

- Increased Mortality
- Increased Morbidity
- Decreased Productivity
- Monitoring Biosecurity



Downstream effects

- Selling Isoweans
- Selling Feeders
- Selling Replacement gilts
- Boar stud



Changing herds

- Changes in genetics
- New herd start ups
- Quarantine barns

Postmortems Help People Learn

Copyright © Zoetis

Postmortems Help People Stay Engaged

Copyright © Zoetis

Getting Started

Sharp knife/ sharpener

Blood tubes/ vacutainer needles

Clip board and paper/pen/marker

Bags

Watertight container

Swabs

PPE

- Gloves
- Safety glasses

Camera

Captive bolt gun

Snare or a board

Ideally a kit

A cooler can be nice!

Ice depending on transport

Formaldehyde



It doesn't always have to be fancy
or complicated to get the job done !!

Signalment

- Farm Info
 - Location
 - On farm communication
(save that Carcass!!)
 - Genetics
 - Feed Provider
- Vaccine history
- Treatment History

Copyright © Zoetis



Signalment (cont)

- Health status
- Stage of production
- Area of barn
- Animal ID
- Time of death
- Was it euthanized (how?)
- Frozen?

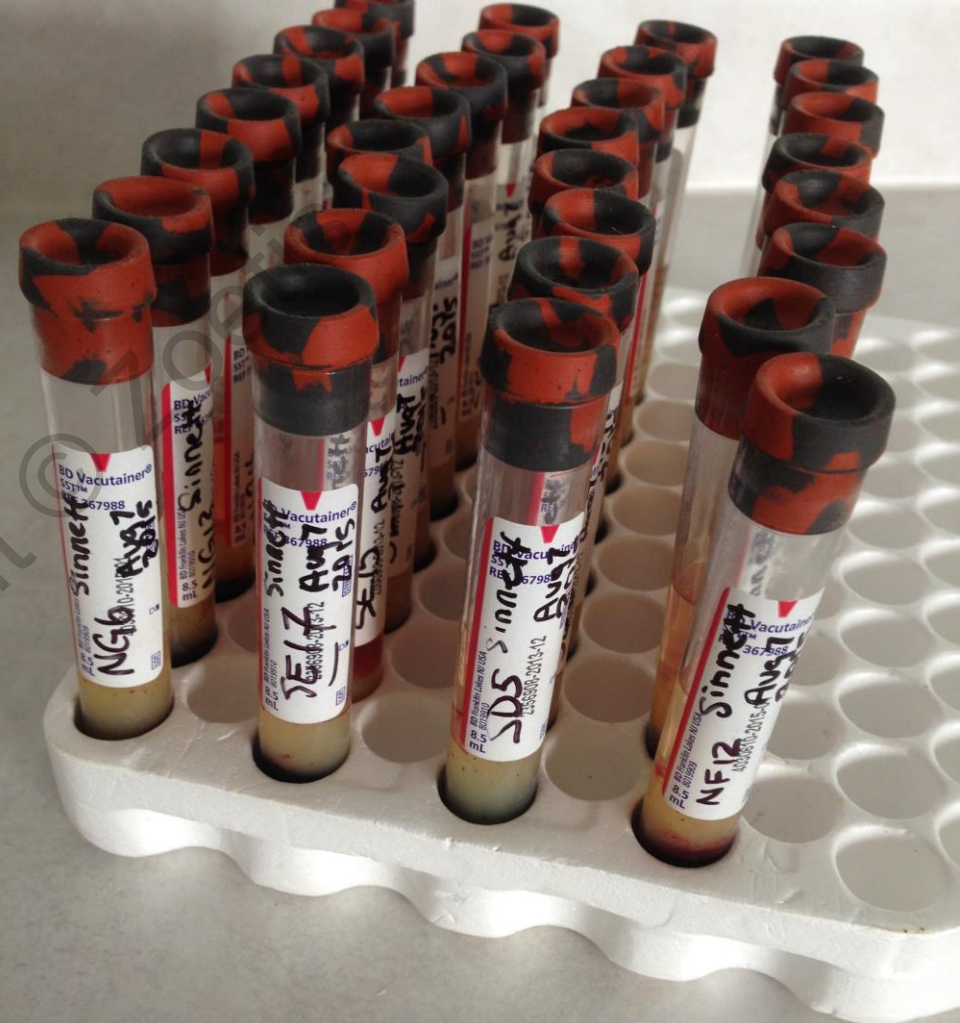


**Taking A Video or
Picture of The Animal
in Question Can be
Very Helpful!**

Copyright © Zoetis

Collecting Antemortem Samples Can Be Helpful

Just remember there is just one chance to get these.....



Use A Systemic
Approach. Do It The
Same Way
Consistently.

This will minimize missing an important
piece of the puzzle!!

External Observation

- Skin
- Joints
- Swelling
- Discolouration
- Eyes
- Ear tips
- Body condition



Opening The Carcass

This is a matter of personal preference

Ventral Approach

- Animal is “laying on its back”
- Flay both front legs and splay the animal out
- Have it so the legs lay on their own without being held
- Cut through the costochondral junction on both sides and remove the resulting triangular piece
- This works best for smaller animals

Lateral approach

- Animal is “laying on its side”
- Start with the front leg by lifting and cutting the space that is created by this
- There is no joint connecting the front leg to the chest
- This works good for larger animals

Thorax

Contains

- Heart
- Lungs
- Thymus
- Lymph nodes

Samples

- Swabs
- Formalin fixed
- Fresh

Are all changes significant?



Abdomen

- Contains
 - Liver
 - Stomach
 - Intestines
 - Cecum
 - Colon
 - Kidneys
 - Bladder
 - Pancreas
 - Spleen
 - Omentum

Copyright ©



Joints

- Check any swollen joints
- Where is the lameness?
- Samples
 - Swabs
 - Formalin fixed
 - Fresh



Head

- Contains
 - Tonsils
 - Tongue
 - Nasal Turbinates
 - Brain
- Samples
 - Swabs
 - Formalin fixed
 - Fresh



Let's Not Forget Reportable Diseases.....

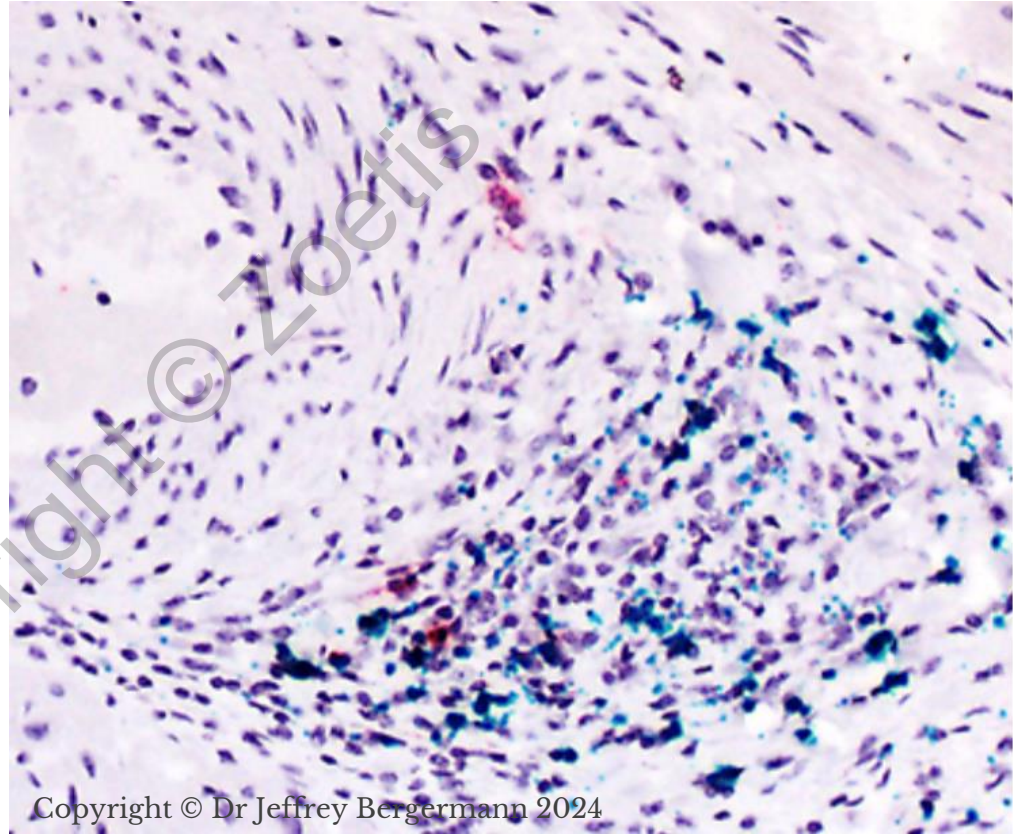


Copyright © Dr Jeffrey Bergermann 2024

Molecular Diagnostics

Its not just all pink and purple skittles!!

- Samples
 - Swabs
 - Formalin fixed
 - Fresh
- Histology
- Cultures



Take Home Messages

- Its not complicated to open up a pig and have a look
- Its good to look, if you think it might be worth looking at do it
- Your Herd veterinarian is a valuable member of your team



Thanks For Your Attention! Any Questions?

Zoetis® is a registered trademark of Zoetis